

# Demystifying Artificial Intelligence







# AI: The Time-Saving Superhero for Libraries Everywhere



Phillip Carter

Director, Starkville-Oktibbeha County Public Library System

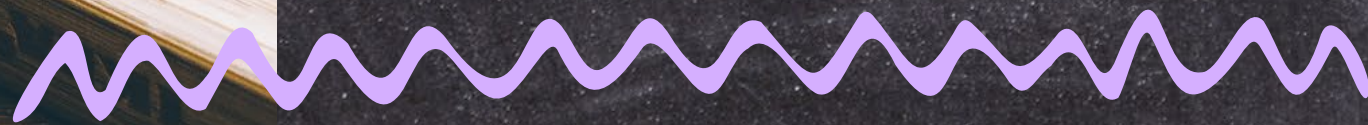
[phillip@starkville.lib.ms.us](mailto:phillip@starkville.lib.ms.us)



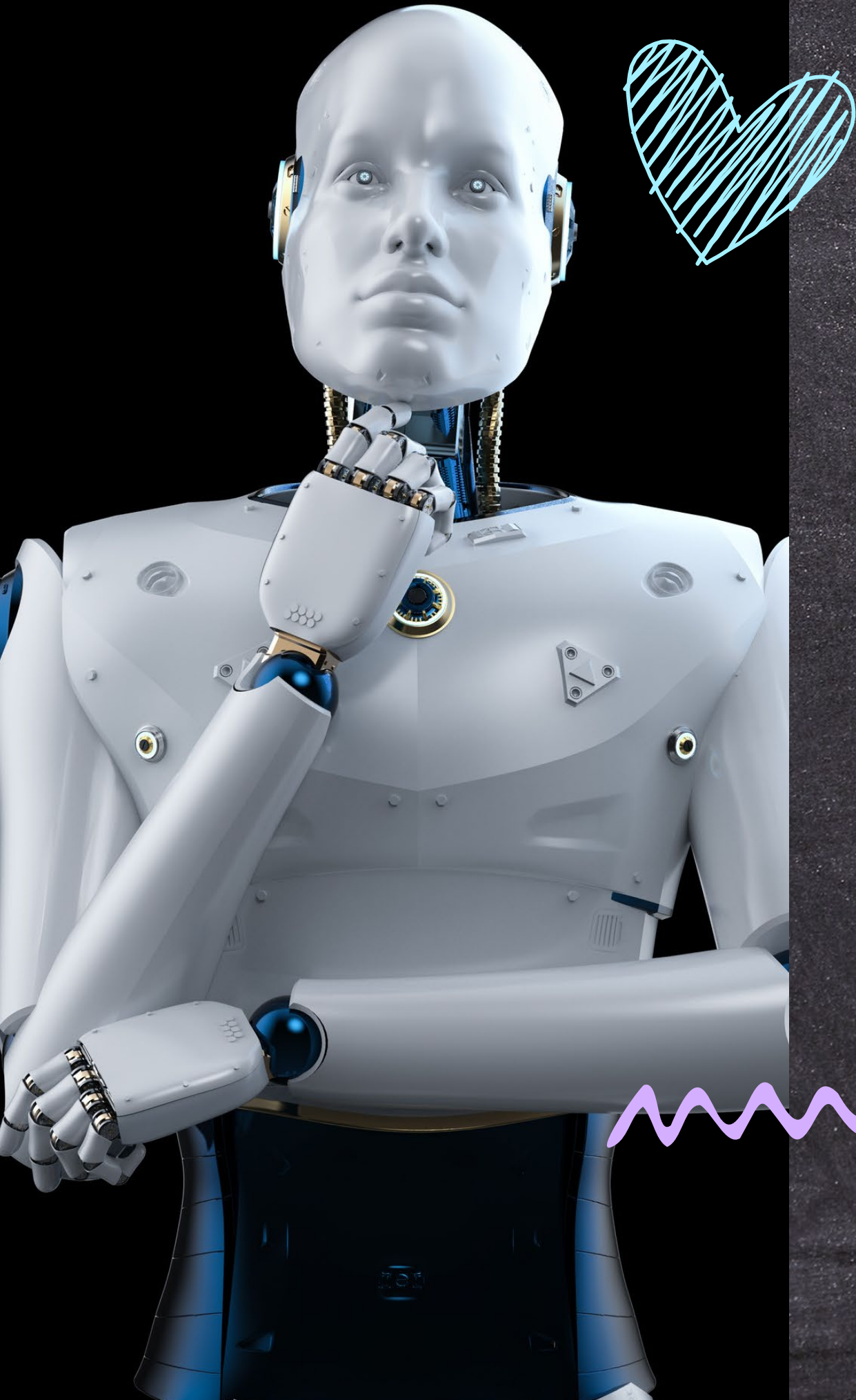


# What is AI?

Artificial intelligence is the ability of machines to perform the cognitive functions we normally associate with the human mind.







...but what is it really?

AI is the science of creating computers that can process information more like the human brain.







# Large Language Model (LLM)?

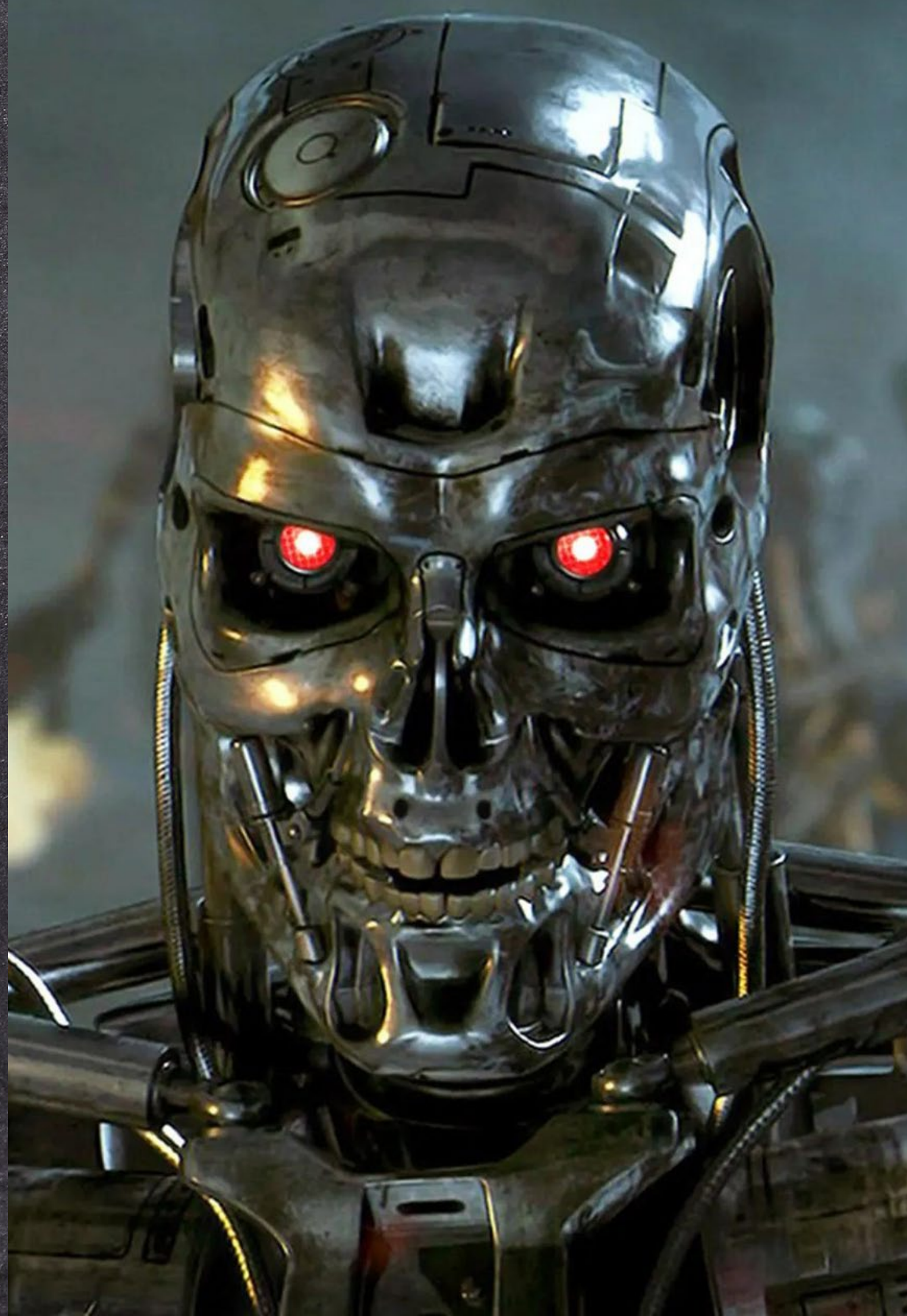
Large Language Models are a deep learning algorithm that can perform a variety of natural language processing task. They are also referred to as neural networks.\*



\* Taken from an article on elastic.co:

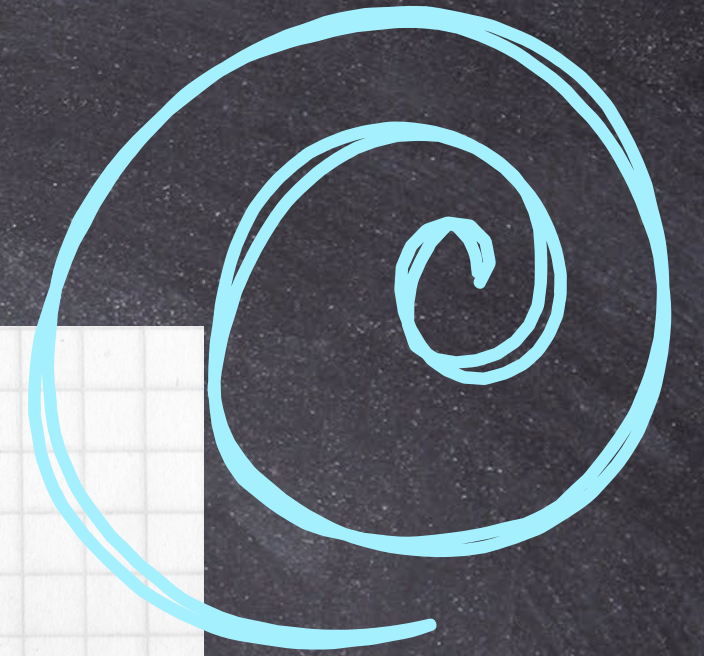
<https://www.elastic.co/what-is/large-language-models>







# Google Translate







# Google Translate



Uses a Neural  
Machine  
Translation  
model

Uses deep learning  
to produce better,  
more natural  
translations  
between languages.

The machine is taught to  
translate, for example,  
English to Korean and  
English to Japanese but  
can use AI to infer how to  
translate Korean to  
Japanese and vice versa.









# AI news isn't all bad ...



Copyright: a US district judge ruled that AI generated art cannot be copyrighted, calming some fears of AI monopolizing the art industry away from artists.

Universal Speech Translator: Meta has created a real-time translator for spoken language enabling communication across language divides.

Climate Change: pano.ai monitors mountains for wildfires decreasing response times for fire fighters to handle the threats before becoming too wide spread.





# Earth Species Project

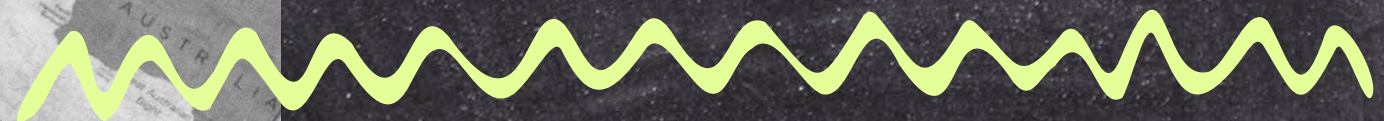
This group is working to map the "speech" patterns of various animals like whales and crows in order to decipher and understand communication between animal species using AI.





## Storm Predictions

AI is being used by meteorologists to generate synthetic storms and identify new precursors to tornadoes. Because of the rarity of tornadoes, these synthetic storms allow researchers the opportunity to gather significantly more data than by using natural storms.





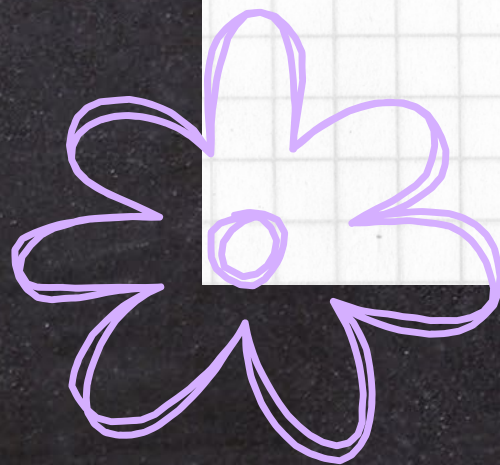






# Bottom Line

AI is a tool that can be used to process, understand, and utilize extremely large data sets in order to accelerate significant (and insignificant!) discoveries, techniques, and sometimes just make us laugh.

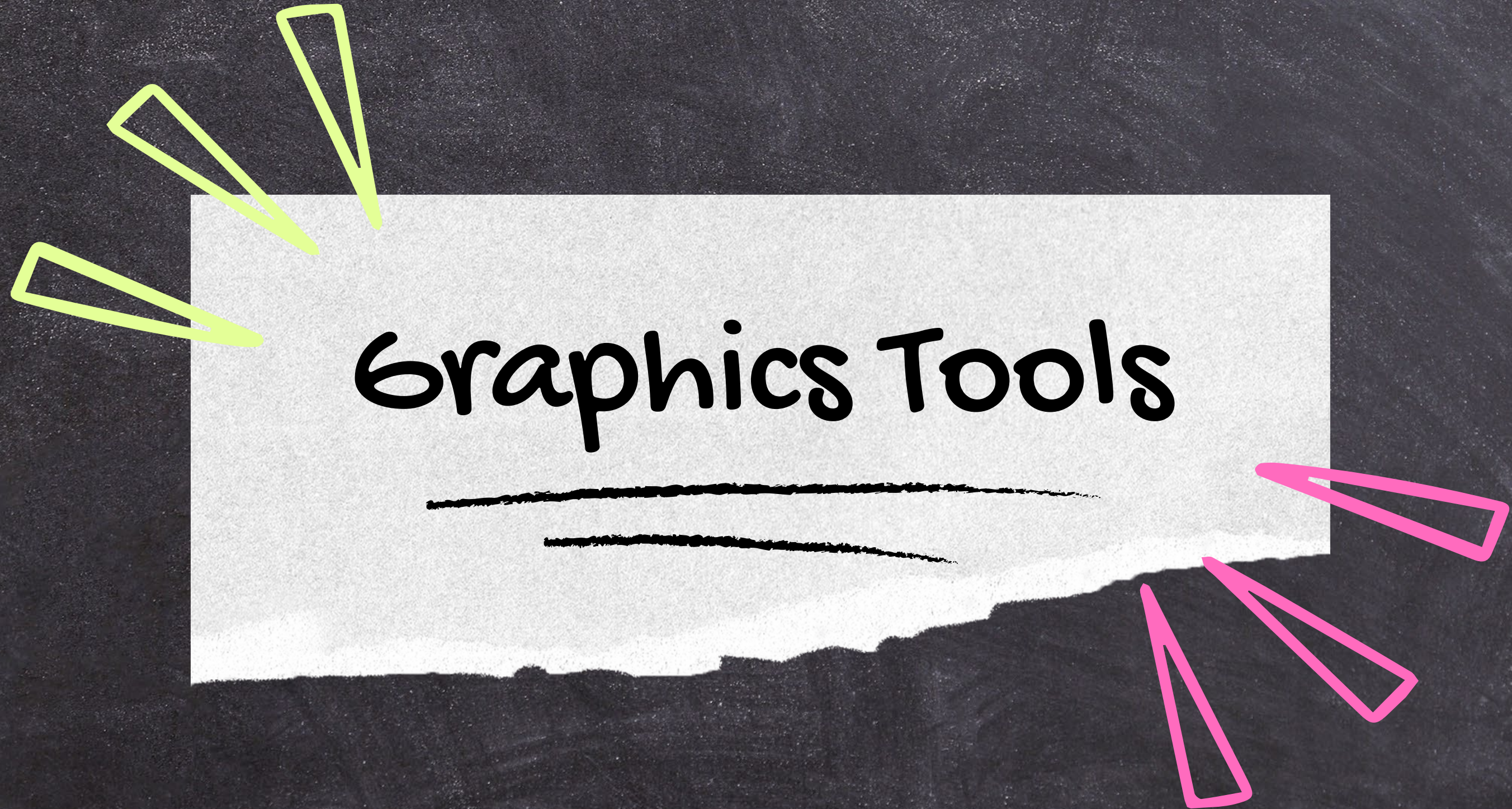




# Graphics Tools

---

---





# Graphics Tools

Canva



Dall-E



Midjourney

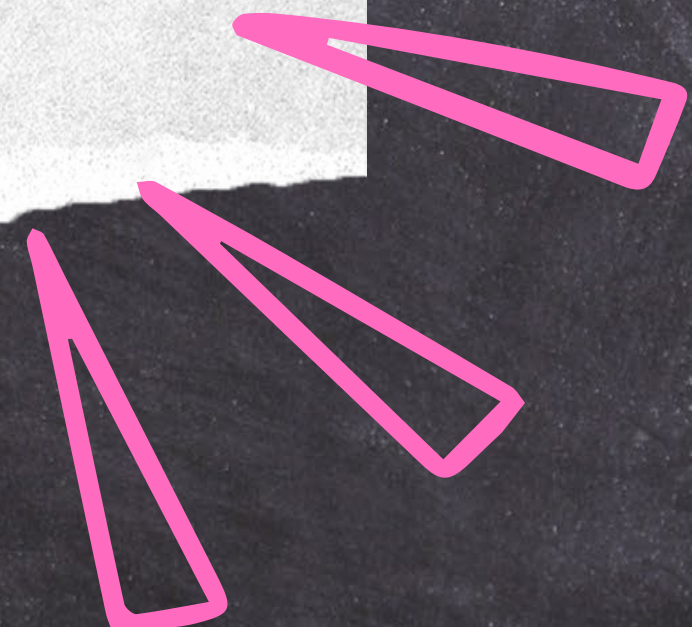




# Narrative Tools

---

---







## Search

AI tool developed by Google AI.



## ChatGPT

AI tool developed by Open AI - one of the earliest LLMs accessible to the public.





~~Bard~~  
Gemini

AI tool  
developed by  
GoogleAI  
(formerly  
called Bard).

ChatGPT

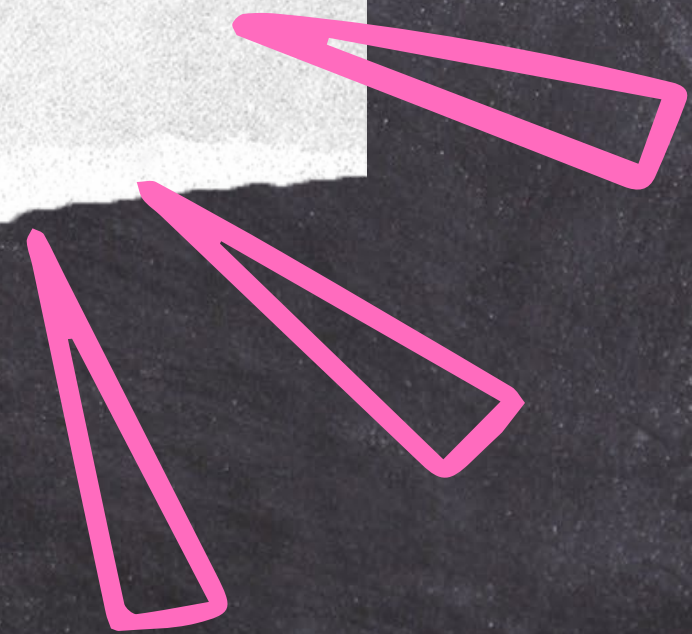
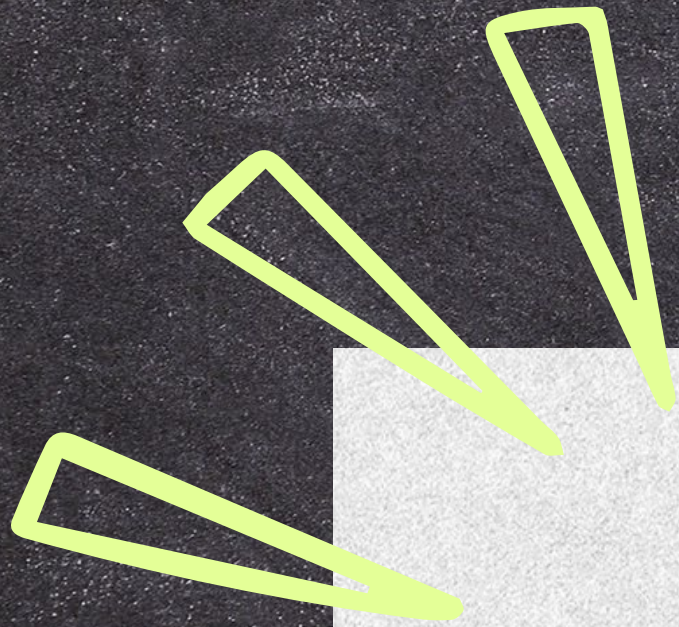
AI tool developed  
by Open AI - one  
of the earliest  
LLMs accessible  
to the public.



Other Tools

---

---







# Other Tools



## boredttumans

Several unique AI tools  
with varying degrees of  
usefulness

## inspirobot

The best waste of time  
I've had in a long, long  
time

## imgcreator

yet another image  
generator

## fiki.ai

Video AI generator with  
music and stock video

## mubert

Royalty free music  
generating tool

## simplified

A little bit of everything  
- including a  
presentation generator





# The Dangers





# The Dangers



Not all AI use prompts the same way - you must learn the ways an individual AI interprets your input to get better results.

Image and video AI can be problematic due to copyright battles. You must review images and videos because AI sometimes hasn't trouble with reality.

Don't trust text or narrative AI results without reviewing. You will need to touch them up to impart any of your own style into them.





Questions?



THANK

YOU

