

Grant Writing



Robin Hargrave
Youth and School Services
South Central Kansas Library System
Spring 2024





Grants

+ Benefits

- Increase
- Improve



[This Photo](#) by Unknown Author is licensed under [CC BY-NC-ND](#)

- Challenges

- Time
 - Planning
 - Collaborations
 - Consensus
 - Obligations/compliance
- Mindset
- Sustainability



Principal
Foundation
Parent Organizations



Table of Contents

- Locating Grants
- Grant Background and Plan
- Acquiring Data and Information
- Prewriting
- Writing
 - What to include
 - Style
- SCKLS Grants





Finding Grants

National

- [Foundation Center](#)
- [Grants.gov](#)
- [Institute of Museum and Library Services](#)



Finding Grants (con.)

- [American Association of School Librarians](#)
- Demco <https://www.demco.com/>
- EBSCO <https://connect.ebsco.com/s/article/Grants-Funding-Sources-for-Libraries?language=en>
 - Includes Grant Writing Tips

Thanks



Finding Grants (con.)

State

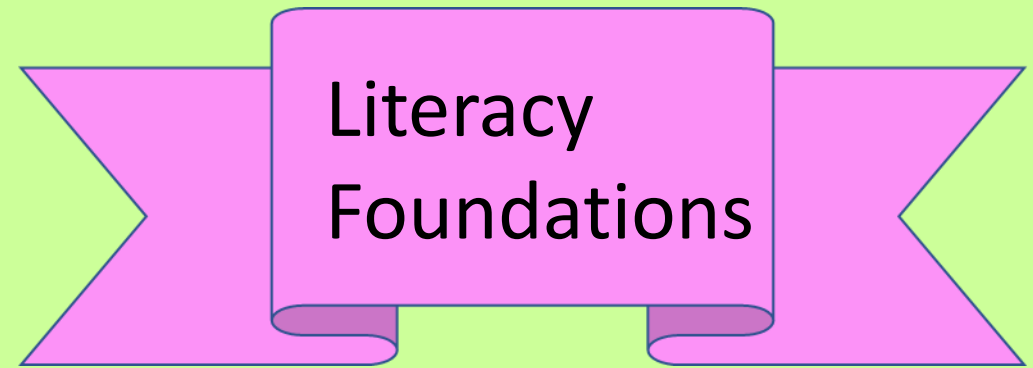
- [Humanities Kansas](#)
- [South Central Kansas Library System](#)
- [State Library of Kansas](#)



Finding Grants (con.)

Local

- Parent-Teacher Organizations
- School Foundations



Community Outreach

- Community Clubs
- Department Stores: Dollar General, Target, Walmart
- Hardware Stores
- Utility Companies



Grant Background and Plan

Strategic Plan

- Provides Structure
 - Documented Areas of Need
 - Outcome Measures
- Prevents Misdirection
- Available Text and Data
- Proposal in Goals, Objectives, Outcomes
- Demonstrate Library Competence and Organization

Grant Plan

- Assess Needs
- Locate Grants
- Create Plan
- Research
- Write Proposal



Strategic Plan for Grant Writing

- Vision & Mission
 - Core Values
- 3-5 Years
- Measures
 - Goals
 - Objectives
 - Strategies/Activities/Tasks

**Survey
Suggestion
Box
Education
Data**



School, District, State

- Kansas State Department of Education
<https://www.ksde.org/>



Skip Navigation

Subject Index | 0-9 | A | B | C | D | E | F | G | H | I | J | K | L | M | N | O | P | Q | R | S | T | U | V | W | X | Y | Z

Teaching & Learning ▾

Policy & Funding ▾

Programs & Services ▾

Data Central ▾

Agency ▾

Board ▾

 **KANSAS**
Teacher of the Year

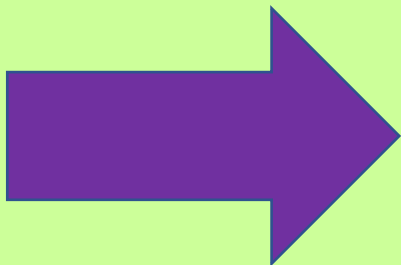
Finalists

#KTOY25

REGION 1	REGION 2	REGION 3	REGION 4
 <p>Whitney Aves Hutchinson High School HUTCHINSON USD 308</p>	 <p>Elizabeth Anstine Leavenworth Sr. High School LEAVENWORTH USD 453</p>	 <p>Ryan Mellick Bonner Springs High School BONNER SPRINGS USD 204</p>	 <p>Erik Stone Gordon Parks Academy WICHITA USD 259</p>
 <p>Maegen Stucky Borough</p>	 <p>Benjamin Eckelberry Towanda Math</p>	 <p>Amber Pagan Wagon Elementary</p>	 <p>Olivia Whiggart Paul B. Coon</p>

Popular Resources

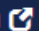
- [About Us](#)
- [Accreditation \(KESA\)](#)
- [Agency Wide Calendar](#)
- [Authenticated Applications](#)
- [Building Report Card](#)
- [Career Interest Inventory](#)
- [Commissioner](#)
- [Data Central](#)
- [Directorio](#)



Kansas State Building Report Card

Aggregate performance and demographic data related to districts and buildings within the state of Kansas.



[View Data](#) 

Kansas K-12 Reports

Information on counties, districts, and schools in the State of Kansas. Information includes data on: building/districts, staff and salary information, attendance, schedules, enrollment, dropout/graduation, vocational education, discipline, advanced courses, student improvement plans, and student satisfaction.



[View Data](#) 



Welcome to the Kansas Building Report Card

Q Find Your School

Find Your School

D0308 - Hutchinson Dist Reno Co (District)

by Address

Within

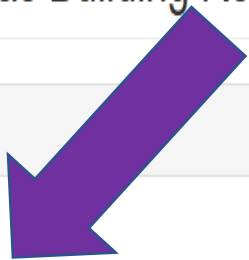
Find using Address, City, or Zip

5 Mile

Search

View State Results

[Select from List](#)



[Home](#) / Kansas Report Card

Welcome to the Kansas Building Report Card

Select Organization

Select a District:

D0308 - Hutchinson Public Schr

Select a Building:

3108 Graber Elementary

Graber Elementary

1600 N Cleveland
Hutchinson, KS

[Similar Schools](#)

[Additional Contacts](#)

USD 308

Grade Range: K-6, Special Ed. 3 & 4,PK
Title 1 Status: Title 1 School
Accreditation Status: Accredited
[Annual Meaningful Differentiation](#)
Website: <http://www.usd308.com>
Email: edigerj@usd308.com
Phone: (620) 615-5050

Enrollment

Building: 267

District: 4,255



Data and Measures

Postsecondary



Graduation



District IDEA State
Performance Plan



Comparative Performance
& Fiscal System



Teacher Licensure



Demographic Information



Dropout



Attendance



Performance Level
Reports



ACT Scores





School Year Selection:

2022-2023

Other Selections:

Subject:

Math

Grade Level:

All Grades

Student Subgroup:

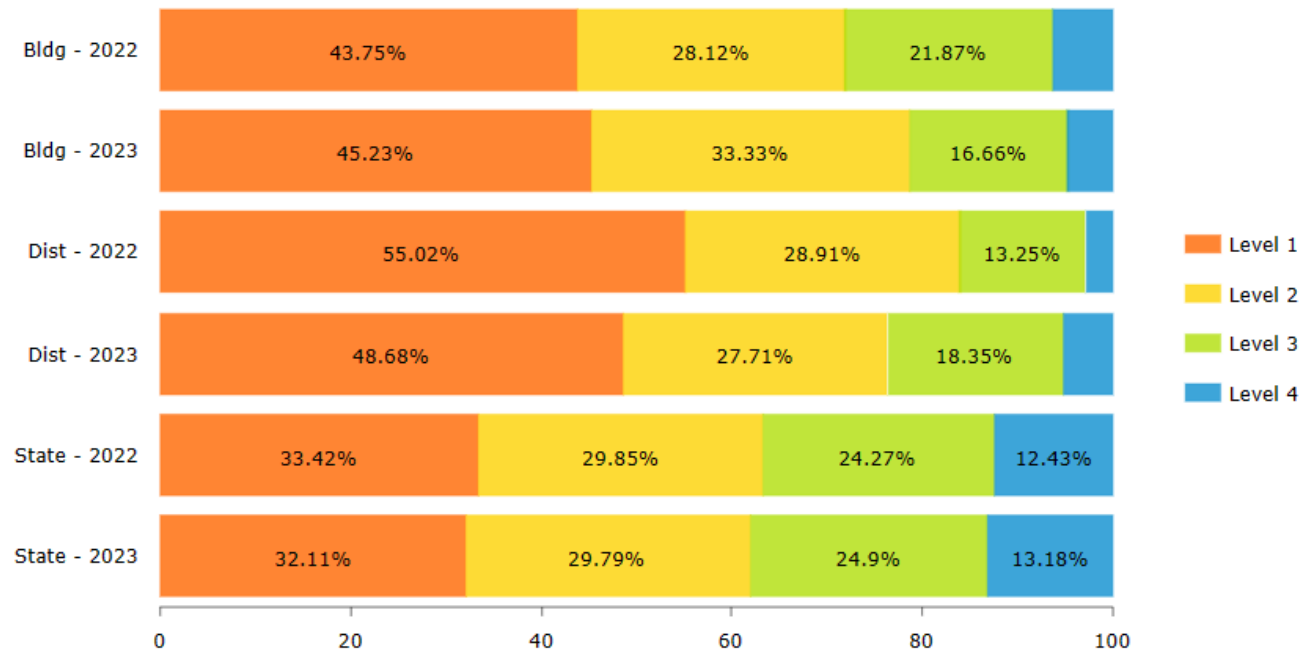
All Students



Longitudinal Performance Level Reports

Subject: ELA Subgroup: All Students Grade Level: 3

*To protect student privacy, when a subgroup has fewer than 10 students the data is not displayed.

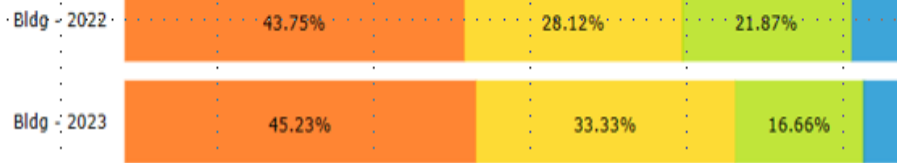




Longitudinal Performance Level Reports

Subject: ELA Subgroup: All Students Grade Level: 3

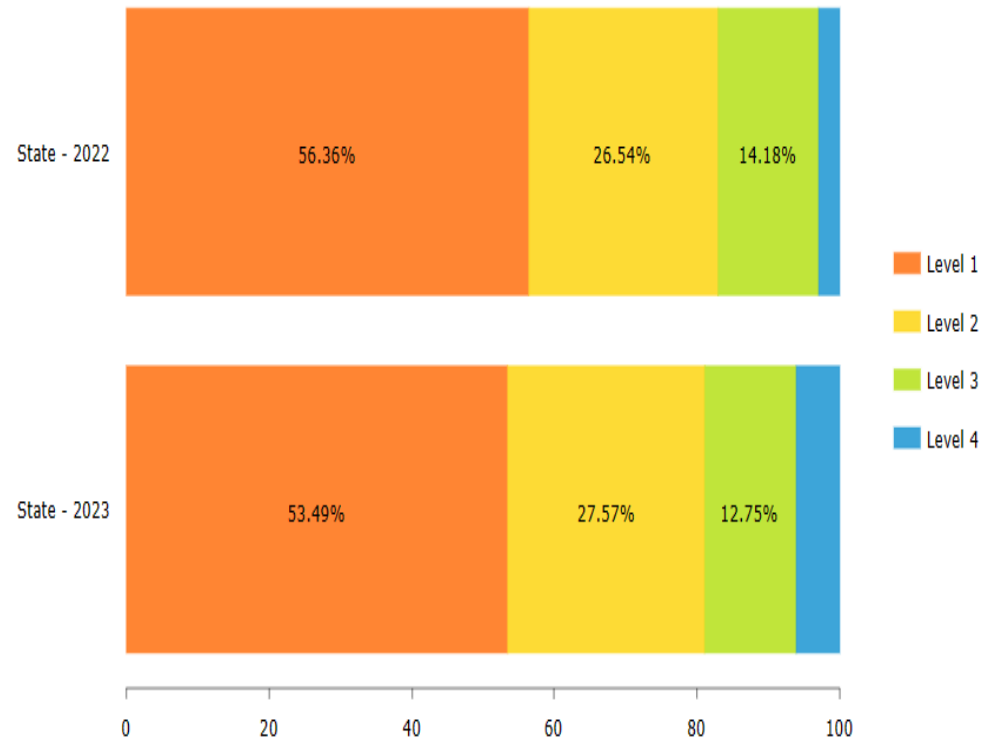
*To protect student privacy, when a subgroup has fewer than 10 students the data is not displayed.



Longitudinal Performance Level Reports

Subject: ELA Subgroup: Foster Care Grade Level: 3

*To protect student privacy, when a subgroup has fewer than 10 students the data is not displayed.



ELA

Grade Level:

3

Student Subgroup:

Foster Care



Prewriting

- Consider
 - Problem to solve
 - Timeline needs for implementation and measurement
 - Measurement to be used
 - Quantitative
 - Qualitative
 - Promotion of grantor
 - Documentation to have and keep in place
 - Role of partners
 - Letters of recommendation



Writing

- Cover Letter/Intent
- Table of Contents
- Summary/Abstract
- Organization Overview
- Statement of Need
- Project Description
- Timeline
- Budget
- Evaluation Process
- Appendix



Gerding, S. & MacKellar, P. (2016). Winning grants: A how-to-do-it manual for librarians. (2nd ed.). ALA Neal-Schuman.



Writing (con.)

Appendix

- Strategic Plan
- 501 (c) (3)
- Honors, Awards
- Letters of Support
- Curricula Vitae

Tips

- Write for Audience
- Active Verbs
- Include Partnerships



SCKLS Grants





**SOUTH CENTRAL KANSAS
LIBRARY SYSTEM**

How Do I...



GRANTS

EVENTS

SERVICES

STAFF



LEARNING
PATHWAYS

MEMBER
DIRECTORY

COMMUNITY
ACCESS

TRAINING
EVENTS

TRAINING
VIDEOS

ASK SCKLS

SCKLS.INFO

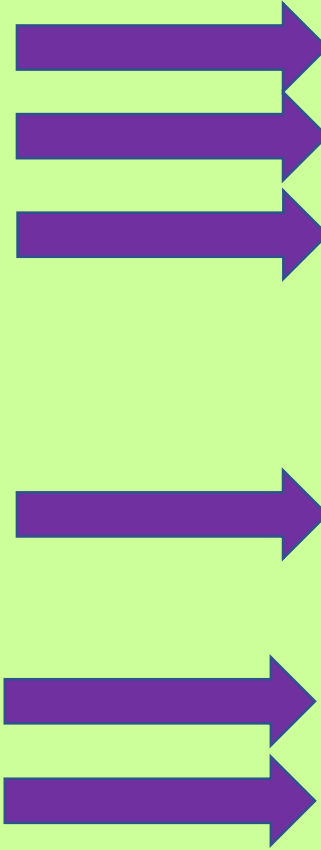




GRANTS

EVENTS

S



Automation Grant

Continuing Education Grant

General Technology Grant

Grants-in-Aid

Library Staff and Board Professional Development Grant

Libraries Transform Grant

Professional Services Grants

New Program/Project Grant

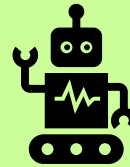
School Interlibrary Loan Grant

Special Library Grant

Summer Library Grant

Past Grant Awards

Update Directory Info





References

- Gerding, S. & MacKellar, P. (2016). Winning grants: A how-to-do-it manual for librarians. (2nd ed.). ALA Neal-Schuman.
- Katarzyna. (2016). Spring flowers grass. Pixabay.



Thank You



Robin Hargrave

Youth and School Services

South Central Kansas Library System

robin@sckls.info; 800-234-0529, ext. 144

